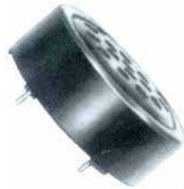
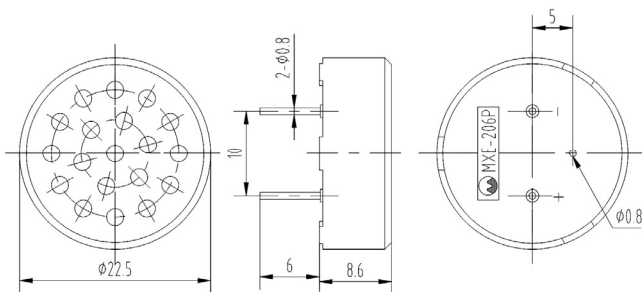
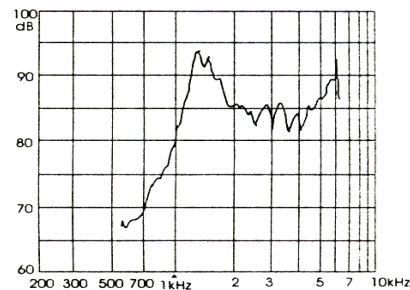


**Loud Speaker****MXE-206P****DIMENSIONS: (Unit: mm)****FEATURES:**

- Printed Circuit Mounting
- Wave Solder Able
- 8 OHM Stand and Impedance

APPLICATIONS:

- Automatic Control Equipment
- Communication Equipment
- Electronic Instruments

CHARACTERISTICS:**ELECTRICAL SPECIFICATIONS:**

Min. Sound Pressure Level at

1500±200Hz/0.8V_{rms} Sine Wave /10cm73dB(A)

Rated Power.....0.08W

Max. Power.....0.15W

Operating Frequency.....500~4000Hz

Resonant Frequency.....1500±200Hz

Rated Impedance.....8Ω

Operating Temperature.....-20~+70°C

Case Material/Color.....PC/ Black

Weight.....3.2g

PACKING INFORMATION:

Packing: 1800 pcs per export carton

Carton Size: 47×30.5×19 cm

G. Weight: 7.3 kgs N. Weight: 5.8 kgs

Address: No. 12. Lane 722. Sangtian Road Jiangdong, Ningbo, 315040 P. R. China

Sales Tel: +86-574-87809820(International)/87805605(Domestic)

Fax: +86-574-87803761

